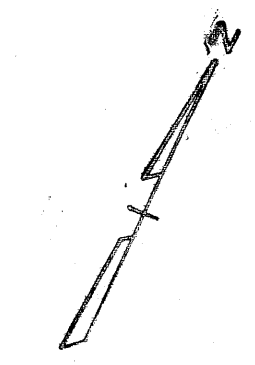
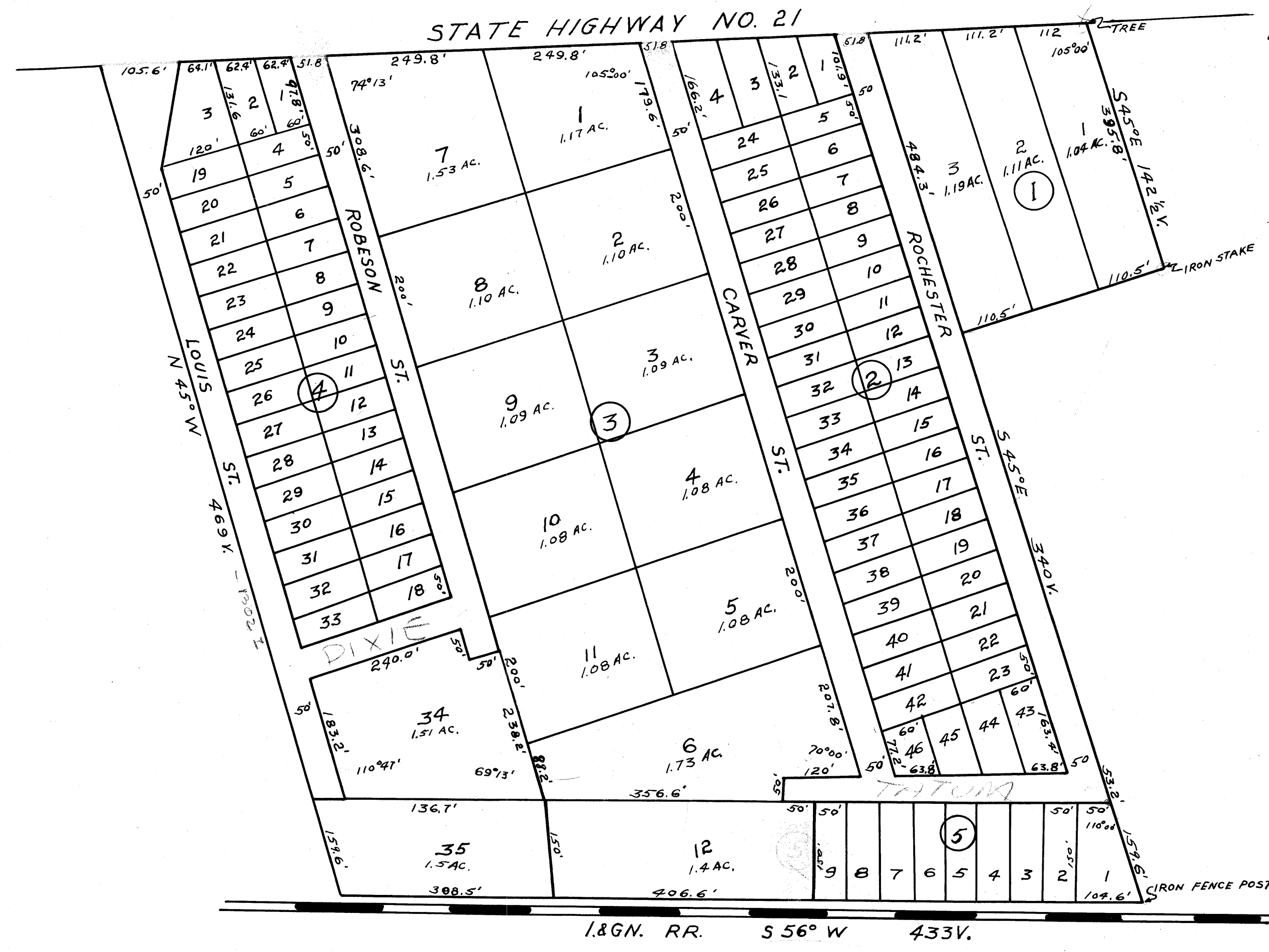


STATE HIGHWAY NO. 21

BROADWAY ADDITION
BRYAN, TEXAS
Scale: 1" = 150' NOV 3, 1945
D.R. 121 Pg. 275



Note: See later Street Dedication
in Block 3, Lot 6.

on base
no 2/6/45

I.&GN. RR. S 56° W 433'